

STURBRIDGE
Recreation

All
Concerts
begin at 6:00 p.m.
on the Sturbridge
Town Common

Bring
your own
lawn chairs
and
blankets

CONCERTS
ON THE COMMON

~ 2015 SUMMER CONCERT SERIES ~

<u>Thursday</u>	<u>PERFORMER</u>	<u>SPONSOR</u>
June 11.....	Premier Brass Band (Name That TV Tune/Trivia Night)	B
June 18.....	4 2 GO with Rob Adams (Classic Rock, Jazz, Folk)	B
June 25.....	East Woodstock Cornet (45 pc. Big Band).....	B
July 2.....	Uncle Sam's Patriotic Band & Uncle Sam Stilt Walker	STA
July 9.....	Sho Productions: Steppin' Out	B
July 16.....	Jumpin' Juba (Rock 'n' Roll, Blues).....	Sturbridge Lions Club
July 23.....	Donna Lee (Merle Haggard & Emmy Lou - Country)	STA
July 30.....	Sweet Harmony Theatre Group (Show Tunes).....	B
August 6.....	Dom Papas (German).....	STA
August 13.....	Point 'n' Swing Big Band (Andrews Sisters).....	B
August 20.....	Black & White (Swing Blues)	STA
August 27.....	Island Castaways (Jimmy Buffet).....	Desy Ice Cream

B = BETTERMENT FUNDING, STA = STURBRIDGE TOURIST ASSOCIATION
PLEASE BE MINDFUL OF THOSE AROUND YOU WHO ARE LISTENING TO THE CONCERT.
Please refrain from parking directly on the town common. Thank you and enjoy the concerts.

Sturbridge Recreation Dept. 301 Main St. 508-347-2041 www.recreation@town.sturbridge.ma.us

"Premier Swing Band"

?

7 Musicians perform LIVE



TV Music Themes Trivia Night

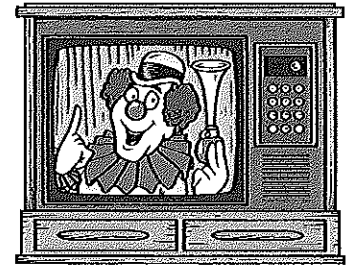
So you think you know your televisions shows that you loved and graced your screens...

Test your music skills

Name the TV Show

Name characters in the show

Who were the main actors or actresses?

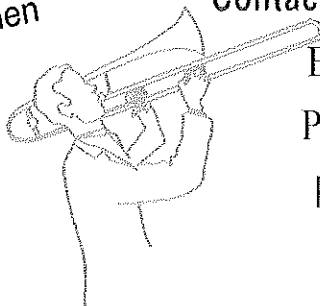


Bring family and friends for an enjoyable night of music trivia.

TV Trivia nights are often used at club fund-raisers, parties, special events and dinners to provide interactive entertainment for all.

It a great social night for all ages.
Attend with a group or simply by yourself.

Warning!!!
Beware it's is so much fun, that when the nights over, you will continue quizzing your friends with your own trivia questions.



Contact: David Neill 413 686-5027

E-mail: tbn8@aol.com

PremierEntertains.com

Premier Entertainment, PO Box 415

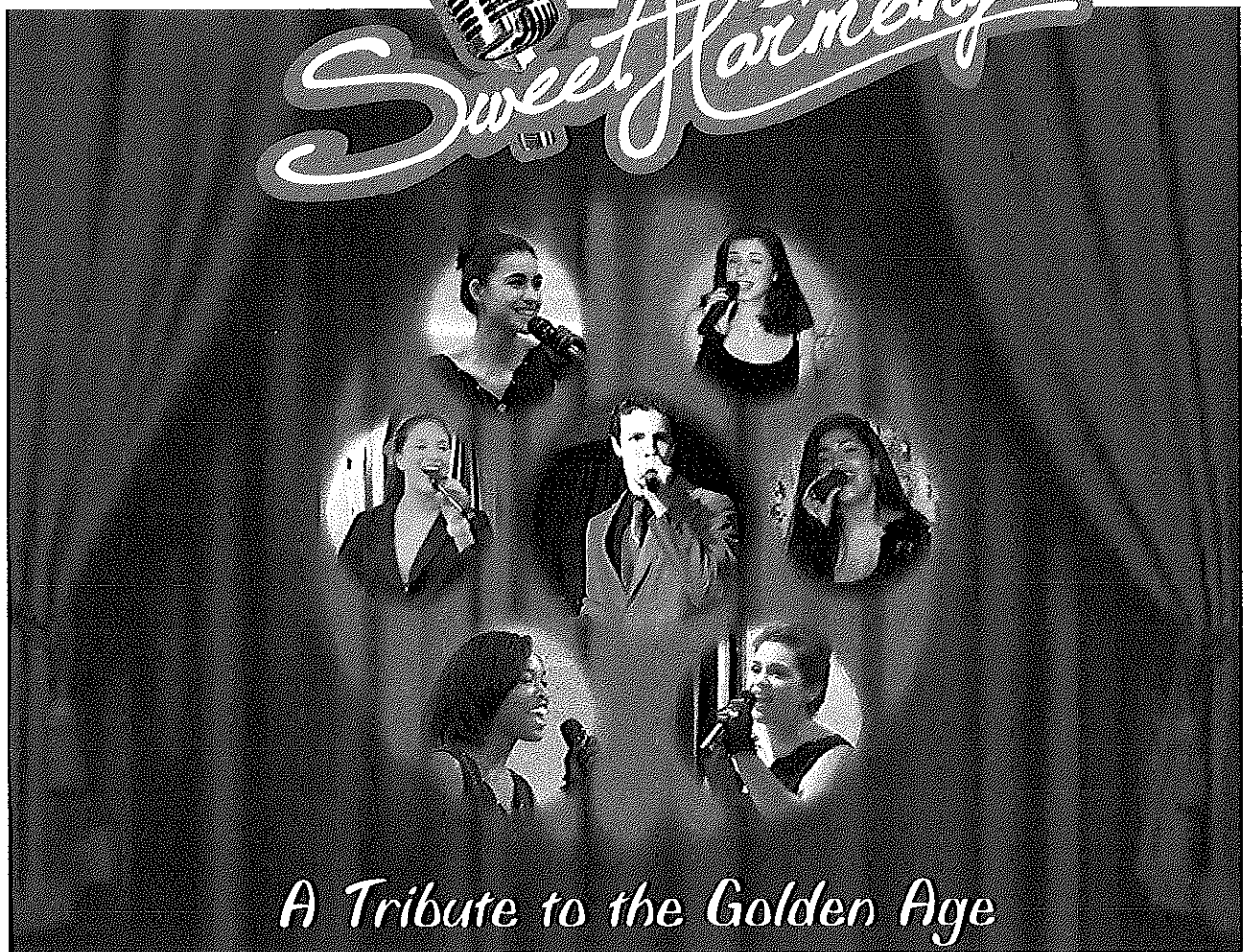
West Springfield, MA 01089

STURBRIDGE PARKS & RECREATION
presents

THAT'S ENTERTAINMENT!

Starring


Sweet Harmony



*A Tribute to the Golden Age
Broadway, Hollywood and Pop*

Thursday, July 30, 2015
6:30 P.M.

presented by



RTWBOSTON.ORG